

# Phantom 800

8x8 DVI Matrix Router  
Video Wall Controller  
Seamless Switching  
Image Processing and Scaling

- Flexible I/O Up to 8x8
- Single Link DVI Matrix Switching
- Seamless Switching
- Scaled Output to 1920x1200 at 60Hz
- Video Wall Mode
- GUI Control Software
- Built-in RS-232/LAN Control
- Compact 2RU Enclosure
- Pixel Re-Clocking & Error Correction
- Enhanced EDID Management



## IMAGE EVOLUTION

The Phantom 800 is the only 8x8 DVI matrix switcher with image processing. The P800 scaling engine now supports video wall mode for any array up to 2x4. Enhanced video wall features include mullion compensation, image overlap for edge blending, and configurable presets.



# Phantom 800

8x8 DVI Matrix Router  
Video Wall Controller  
Seamless Switching  
Image Processing and Scaling

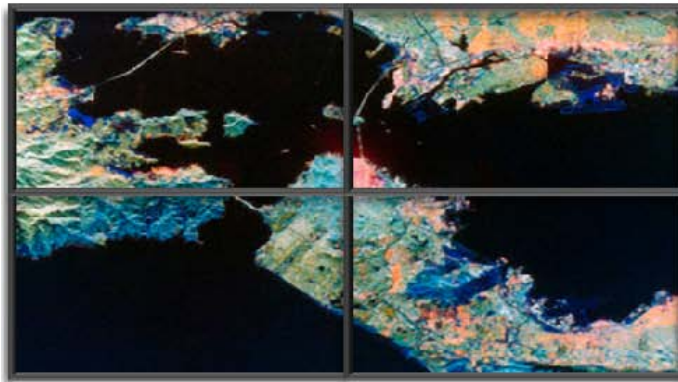
## Image Scaling

The Phantom 800 video scaling engine supports single link DVI sources up to 1920x1200. The image processor provides seamless switching, smooth zoom and pan capability, and up/down conversion.

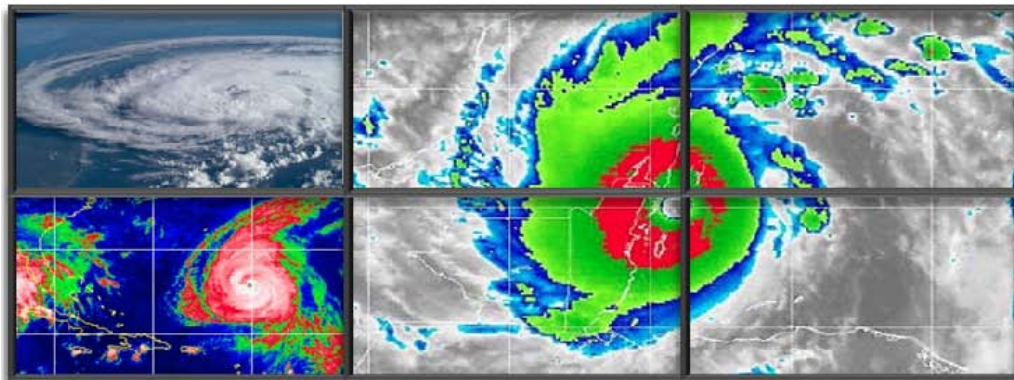
## Video Wall Controller

Any input can seamlessly span across up to 8 outputs to create a video wall. Outputs can be grouped for multiple wall geometries.

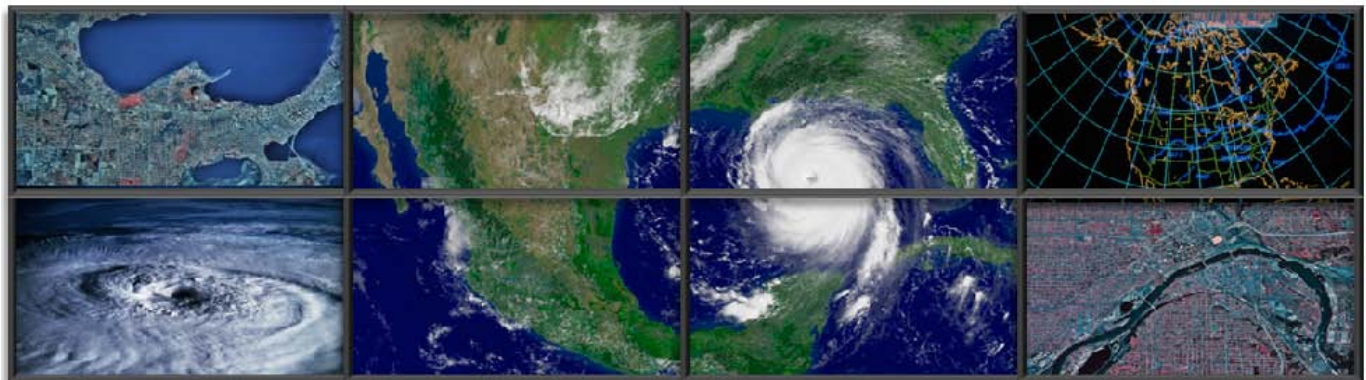
▪Phantom 2x2 Wall Array



▪Phantom 2x3 Wall Array



▪Phantom 2x4 Wall Array



## Markets

Command and Control  
Audio Visual  
Security  
Large Venue

Simulation and Training  
Education  
Medical Imaging  
Military



# Phantom 800

8x8 DVI Matrix Router  
Video Wall Controller  
Seamless Switching  
Image Processing and Scaling

Specifications	
Architecture	Non-blocking cross-point switch
I/O Configuration	Any I/O configuration in multiples of 4 supported, up to 8x8 single-link DVI.
Video Format	DVI Single Link, supports maximum TMDS rate of 1.65 GB/s
Video Resolution	Scaled output rates from 640x480 to 1920x1200
Connectors	DVI-I Female
Control	RS232, 10/100/1000T Ethernet, Java GUI
Seamless Switching	Yes
Video Wall Processing	Yes
Scaler Functions	Fit, Fill, Center, Stretch, Pan/Zoom, Programmable LUTS
Input Status and Timing Measurements	Yes
I/O EDID Management	Yes
Cable Supported	Input supports 50 meters of copper cable without external conditioning. Output supports 50 meters of copper with phantom powered conditioning at display device.
Converters Supported	Input supports BDV's current line of signal converters: RGB-DVI, SD-DVI, SDI/HD-SDI-DVI.
Field Upgradeable Firmware	Yes
Power	200W full load, 90-240VAC, 47-63Hz
Temperature Rating	0-55 Degrees C
Rack Height	Compact 2U rack height
Dimensions	16.73" length x 12" depth x 3.5" height

## Black Diamond Video

Corporate Headquarters  
503 Canal Boulevard  
Point Richmond, CA 94804  
877-549-6600

[www.blackdiamondvideo.com](http://www.blackdiamondvideo.com)

