

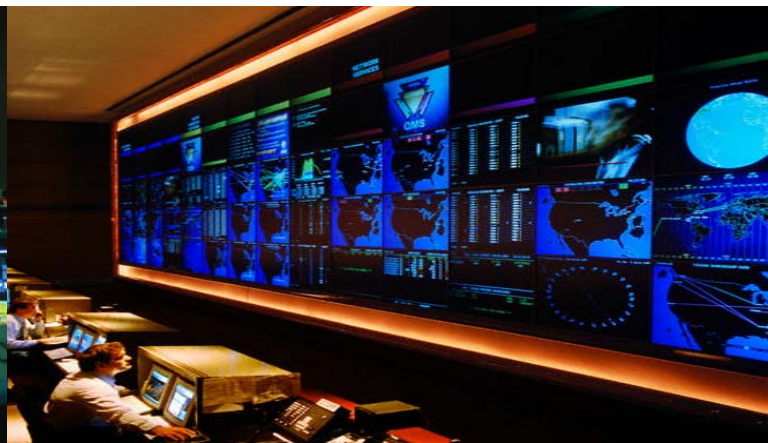
# BDV - Fiber - RX/TX

DVI Transmission over Fiber up to 1000m  
Single Link DVI  
External or Pin Powered  
Auto EDID Detection



- Bi-Directional Communication for EDID Management
- Data Rates up to 1.65 Gb/s per Color Channel
- Single Strand Multimode Fiber 50/62.5u
- Robust SC Style Fiber Connector
- Plug and Play. Automatically Transfers EDID Information
- Low RFI / EMI Profile for Sensitive Applications
- Transmitter unit Powered by DVI Source or Externally
- Receiver unit is Powered by +5VDC External Power Supply
- LED Link Status Indicator
- Field Upgradeable Firmware
- Aluminum Enclosure

Rev. 2.02



## Markets

Command and Control  
Audio Visual  
Security  
Large Venue

Simulation and Training  
Education  
Medical Imaging  
Military



# BDV - Fiber - RX/TX

DVI Transmission over Fiber up to 1000m  
Single Link DVI  
External or Pin Powered  
Auto EDID Detection

Specifications	
Operating Voltage	+4.7V to +16V DC
Power	0.8W
Power Options	Pin Power or External
External Power Supply (Included)	In: 100-240Vac, 50-60Hz, Out: +5V DC 1A
Power Supply Plug Dimensions	1.3mm I.D. x 3.5mm O.D. x 9.5mm Female
Power Options	Pin Power (TX) or External (TX, RX)
DVI Connector Type	DVI-D
Fiber Connector Type	SC
Fiber Type	Single Strand Multimode 50/125-62.5/125
Data Rate	1.65Gb/s per color channel
TX Optical Modulation Amplitude (OMA)	-6.25 dBm
RX OMA Sensitivity	-14.25 dBm
High Speed Lane Optical Wavelengths	778, 800, 825, 850 nm
Low Speed Lane Optical Wavelength	911 nm
Laser Class	Class 1R
Fiber Distance (OM3/OM4)	1000 meters
Dimensions	1.56 (39.6) x 2.39 (60.7) x 0.6 (15.2) in(mm)
Weight	3 oz
Operating Temperature/Relative Humidity	0 - +50C / 10-80%
Agency	CE,CSA, UL (Pending)

**Black Diamond Video**  
Corporate Headquarters  
503 Canal Blvd.  
Richmond, CA 94804  
877-549-6600  
[www.blackdiamondvideo.com](http://www.blackdiamondvideo.com)

